



**03-09.05.2012**  
<http://www.rotaryconvention2012.com/>



2482  
2011/2012



03-09.05.2012

<http://www.rotaryconvention2012.com/>



2012

- 4 - ;
- 5 - ( );
- 6 - ;
- 7, 8 9 - ,  
( ). ” ” ;
- 10 / 11 - ;
- :
- 5, 6, 7 8 , ,
- 7, 8 9 , ,
- , , ,



03-09.05.2012

<http://www.rotaryconvention2012.com/>



1200 .

);  
- ;  
- ;

1. 1.12.2011 . ;
2. [online](#) ;  
5 ,
3. 6 ;
4. - [paperregistrationform](#) ;  
- [visarequirements](#) ;

195, : 1.12.2011 . US\$ 160,  
US\$ 50; 1.12.2011 . 1.03.2012 . - US\$  
US\$ 75.

22.11.2011 . [imatev@hotmail.com](mailto:imatev@hotmail.com) ,  
[boiana.bankova@gmail.com](mailto:boiana.bankova@gmail.com) .

- 1.12.2011.

## 2012 Convention Schedule at a Glance

Events	Thursday	Friday	Saturday	Sunday	Monday	Tuesday	Wednesday
	03-May	04-May	05-May	06-May	07-May	08-May	09-May
InterFaith Service							
Plenary Sessions							
House of Friendship							
World Peace Symposium							
Registration							
Pre-Convention Meetings							
International Institute							
YEO							
Paul Harris Fellows Celebration							
Breakout Sessions							
Rotary Alumni Celebration Luncheon							
President's Recognition Luncheon							
President-elect's Leadership Luncheon							
Officer's Reunion Luncheon							

- Графично изображение на програмата за Конгреса;

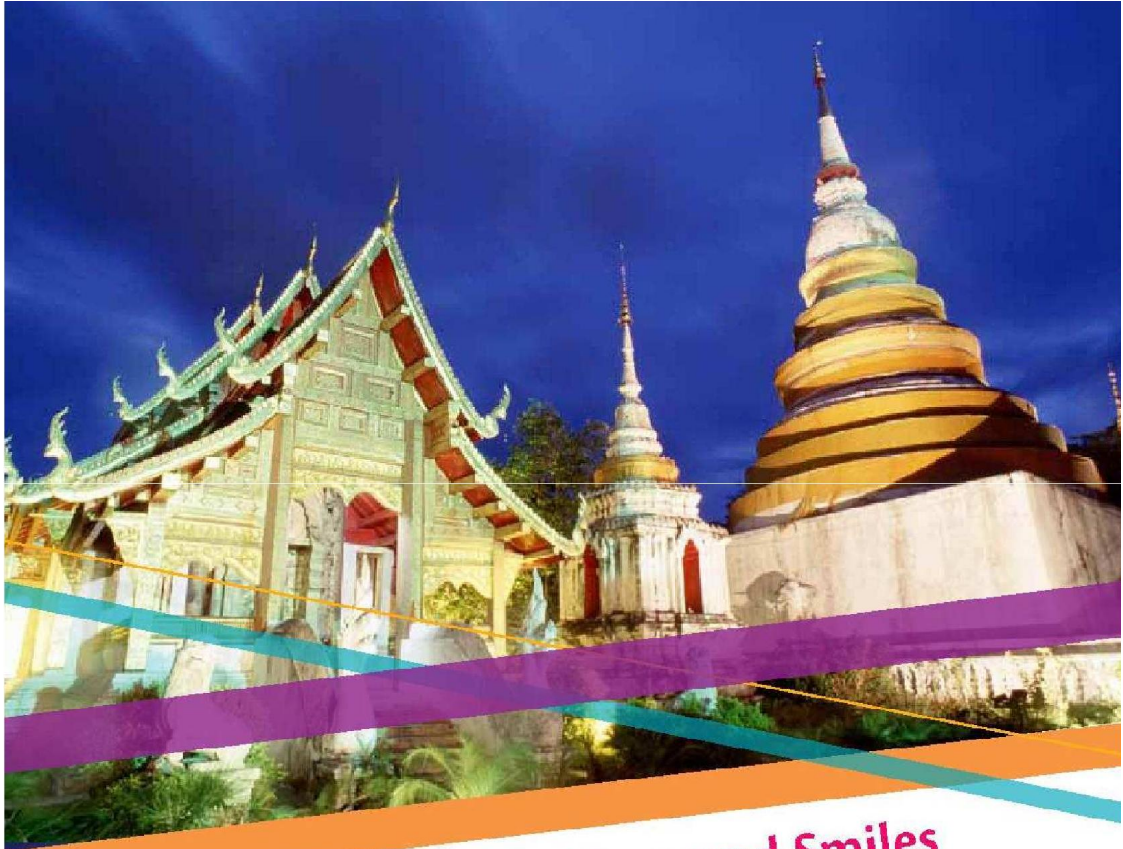
Registration Categories			
1 Rotarian	4 Guest age 19 or older	7 TRF alumnus (2004-05 or later)	10 Interactor
2 Spouse of deceased Rotarian	5 TRF alumnus (prior to 2004-05)	8 One guest of category 6 or 7	11 Guest age 5 to 18
3 Rotary club/district employee	6 Rotaractor	9 Youth Exchange student	12 Guest younger than 5
	Register Early and Save!		
Registration Category	Deadline 1: 1 Dec. 2011	Deadline 2: 1 Mar. 2012	On-site/ Online after 1 March
1 – 5	US\$160	US\$195	US\$245
6 – 8*	US\$50	US\$75	US\$100
9 – 11	US\$10	US\$10	US\$20
12	Free	Free	Free

\*Rate does not apply if you were a Rotarian before your Foundation program participation (for example, GSE team leaders and Rotary Volunteers).

- Таблица за крайни срокове и категориите за заплащане;

<http://www.rotaryconvention2012.com/>.





The Land of a Thousand Smiles

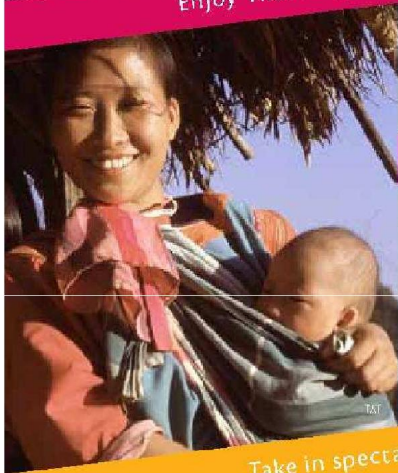


 **Bangkok**  
THAILAND  
ROTARY INTERNATIONAL  
CONVENTION 6-9 MAY 2012



# In Bangkok, you'll...

Enjoy Thai hospitality



Make friends with fellow Rotarians from around the world



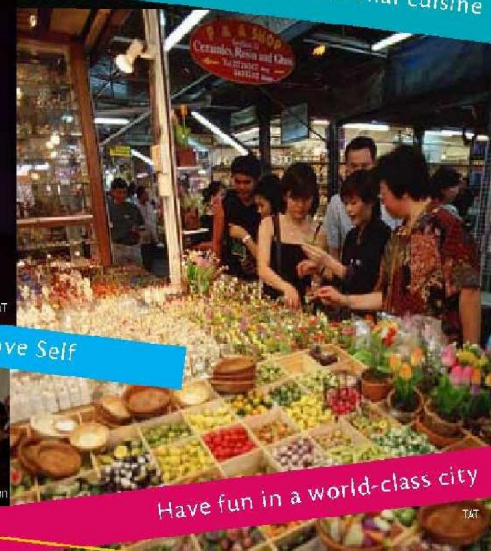
Take in spectacular sights



Experience a vibrant culture



Taste delicious Thai cuisine



Renew your commitment to Service Above Self



Have fun in a world-class city

## Join us in Bangkok



Dear Rotarian:

Please accept my personal invitation to join me and our fellow Rotarians in Bangkok, Thailand, 6-9 May 2012, for the 103rd Rotary International Convention — an incredible event in one of the world's most fascinating cities.

Thailand is a spectacular destination, truly the **Land of a Thousand Smiles**. I would particularly urge Rotarians who have never visited Asia before to consider this your chance. Bangkok is a fantastic gateway to explore Southeast Asia and a wonderful experience on its own for a shorter trip. For those who hail from countries closer by, take the opportunity for a great getaway — with all the dining, shopping, and sightseeing opportunities of a major cultural capital. Indeed, for those who have been there already, you know that you can never get enough of Bangkok.

But the best reason to visit Bangkok, of course, will be the Rotary convention itself: the highlight of the Rotary calendar and an opportunity not to be missed.

All through the year, we reach out to Rotary communities across the globe. At the convention, we have the chance to see all those communities represented in one place — to hear all the languages, see all the people, and learn about all the projects of the past year. Nothing brings home the internationality of Rotary like a Rotary convention, and nothing else has the same power to inspire.

Every year, I go to the RI Convention excited to see old friends and make new ones, to celebrate our successes and learn from our experience. And every year, I leave with a sense of pride in Rotary, eager to continue my commitment to Rotary.

This year promises to be the best convention yet. I urge you to register now and to begin planning for our 103rd Rotary International Convention in Bangkok!

Sincerely,

A handwritten signature in black ink that reads "Kalyan Banerjee". The signature is written in a cursive style and is positioned above a thin horizontal line.

Kalyan Banerjee  
RI President, 2011-12



## The cultural splendors of Bangkok

Bangkok is an ideal host city for a Rotary International Convention. Known as the City of Angels, Thailand's vibrant capital attracts millions of international visitors annually, who are drawn to its rich cultural heritage, delectable cuisine, and unsurpassed hospitality. Join thousands of fellow Rotarians in Bangkok to celebrate the international accomplishments of the 2011-12 Rotary year.

New adventures and experiences await you in Bangkok. A cultural and business center of Southeast Asia, Bangkok is a study in contrasts. Modern hotels, restaurants, and banks stand next to ancient shrines and sacred temples. Busy marketplaces — some on water — bustle with activity while Buddhist temples offer a moment to reflect in quiet reverence. In the evening, enjoy a relaxing meal on the Chao Phraya River or watch an exciting kickboxing match while sipping cold Thai beer. Whatever your inclination, Bangkok will leave an impression and memories to take back home and share with your club.

## Top attractions

### Wat Phra Kaew and the Grand Palace

The Temple of the Emerald Buddha is considered the most important temple in Thailand and the spiritual home of Thai Buddhism. With its shining spires and a Buddha image carved out of a single block of jade, Wat Phra Kaew is a must-see among several stunning *wats* in Bangkok. Adjoining the temple is the former residence of the royal family, the Grand Palace. Tour the grounds for stunning architecture and a glimpse of the culture of Thailand's monarchy.



### Shopping

There is something for every type of shopper in Bangkok, from bargaining with street vendors to browsing luxurious boutiques. Visit one of the 150,000 stalls in Chatuchak Weekend Market on a quest for the best deals in clothing, gadgets, crafts, and almost anything else. If modern shopping centers are more your speed, head to one of Bangkok's air-conditioned Mahboonkrong, often referred to as MBK, for jewelry, fashion, and electronics. In the city center, Bangkok's chic crowd shops at Erawan Bangkok for designer fashions before heading to a tearoom to enjoy the view overlooking the Erawan Shrine.

### The Floating Markets

Floating markets, such as Damnoen Saduak, have become the symbol of Bangkok. Although they now cater mostly to tourists, floating markets provide a glimpse of how the city uses waterways to deliver food and other products to residents. From your vantage point on the canal sidewalk, you'll also find goods such as traditional straw hats, coconuts, and sweets available from merchants floating by in narrow boats.

### The delights of Thai food

Bangkok provides countless culinary choices. Food is deeply engrained in the culture, and a common way to say hello in Thai is "Have you eaten rice yet?" Thai cuisine is renowned for its delectable use of fresh ingredients, herbs, and spices. Snack on chicken satay or fresh coconut water from a street vendor, dine in a converted teak house at Ruer Mallika, or enjoy the city vistas from the rooftop restaurant Moon Bar at Vertigo.



## Discovering Thai culture

### Thailand's monarchy

Thailand is a constitutional monarchy. His Royal Highness King Bumiphol Adulyadej, the world's longest reigning head-of-state, is greatly revered and respected by the Thai nation. Negative commentary about the king or the monarchy is a social taboo.



### Nightlife, arts, and entertainment

Whether you raise a toast and view the lights of Bangkok from one of the city's many rooftop bars or sip wine over quiet conversation at a local inn, there are many opportunities to unwind after a day at the convention. Music aficionados can enjoy live performances of pop, jazz, and blues in area clubs. Considered the art capital of Southeast Asia, Bangkok also boasts several galleries that are open until the early evening hours for your browsing pleasure. For an unforgettable evening of traditional art, don't miss the Thai masked dance drama at Sala Chalermskrung.

### Family fun

Bangkok offers activities for the entire family, including water parks such as Siam City and Dream World. For an up-close experience of Thailand wildlife, take a short cab ride just outside the city and visit the Sampran Elephant Ground and Zoo. Reptile enthusiasts may enjoy a visit to the Samut Prakan Crocodile Farm and Zoo.

## Thailand's great temples

Buddhism has been practiced here for centuries and more than 90 percent of Thais are Buddhists. Offering more than just views of stunning architectural wonders and beautiful relics, Buddhist temples, or *wats*, are a window into the spiritual heart of the country where non-Buddhists are welcome to visit. When entering a *wat*, dress respectfully (no shorts, sleeveless shirts, or skirts above the knee) and remove your shoes. Don't miss these Bangkok temples:

### Wat Arun

The Temple of the Dawn, facing the river, is known for offering sublime views at dawn and sunset.

### Wat Pho

Adjacent to the Grand Palace, Thailand's oldest temple is home to a giant reclining Buddha statue.

### Wat Suthat

Renowned for its beautiful rooflines, this *wat* features colorful murals depicting the life of the Buddha.



## Discovering Thai culture

### The *wai*

Make friends with Thai Rotarian hosts by greeting them with the traditional *wai*. Place the palms of your hands together in front of your chest and bow your head gently until your nose is level with your tallest fingers, keeping your elbows tucked to your side. Traditionally, Thais *wai* each other based on social structure. For example, children always *wai* an elder first. It is polite to return or acknowledge a *wai*. For more on Thai customs, consult your travel guide.



## Greater Bangkok

Just outside Bangkok, you'll find many opportunities to explore and enjoy Thailand's unique culture.

### Ayuthaya, the ancient city

A UNESCO World Heritage site just north of Bangkok, and the former seat of the Siamese Kingdom, Ayuthaya offers a glimpse of what Thailand was like hundreds of years ago.

### Samut Prakan

View reproductions of the greatest monuments from throughout Thailand at the world's largest open-air museum, Ancient City theme park in Samut Prakan.

### Ko Samet

For a quick island getaway, head south to Ko Samet. Visitors can rent a quiet bungalow or enjoy exciting nightlife on a variety of beaches suiting every taste.

### Green experiences

For a break from Bangkok's bustling streets, make an expedition to one of the region's green spots, such as Kaeng Krachan National Park or Khao Yai National Park, to admire the country's tropical flora and fauna.

Visit [www.tourismthailand.org](http://www.tourismthailand.org) for more travel ideas.



## Rotary in Thailand

RI President Bhichai Rattakul (2002-03) was the first Rotarian from the country to lead RI. Other Rotary leaders from Thailand include Past RI Director Noraseth Pathmanand, who serves as the Host Organization Committee chair for the convention, among other positions. Past District Governor Saowalak Rattanavich has helped expand concentrated language encounter (CLE), a literacy method first developed by Rotarians, to more than 30 countries using Thai universities as a training base.

Register online: [www.rotary.org/convention](http://www.rotary.org/convention) | 3



Register by Thursday, 1 December 2011,  
to take advantage of early registration pricing!

## How to register...

Here's a quick reference guide for the steps you need to take.

### 1. Consider options before registering...

#### Decide if you'll register with a group or as an individual

Your choice will affect how you register for the convention. You can register yourself and up to four guests online, but if you have a group of six or more, you'll need to submit a paper registration form. If you have a group of 25 or more, contact RI Registration Services ([ri.registration@rotary.org](mailto:ri.registration@rotary.org) • +1-847-866-3495) for information and instructions.

#### Choose your travel dates

Check the preliminary schedule on the back page of this booklet and select the pre-convention activities you wish to attend. It's best to determine your travel dates before you start the registration process.

**Quick tip:** For the most up-to-date schedule, go to [www.rotary.org/convention](http://www.rotary.org/convention).



4 | Bangkok 2012

### 2. Register and reserve room online...

#### Register for the convention and RI-ticketed events

Using Member Access at [www.rotary.org](http://www.rotary.org) to complete your registration online is convenient and secure. Within two business days, you'll receive an e-mail acknowledgment with your registration number; and within a week, you'll receive your registration confirmation. If you don't yet have a Member Access account, creating one is quick and easy.

**Quick tip:** Find information on visa requirements and the tourist visa exemption at [www.mfa.go.th](http://www.mfa.go.th).

#### Register for host-ticketed events

Local Rotarians on the Host Organization Committee have arranged several cultural excursions and host hospitality events to help visiting Rotarians enjoy their stay in Bangkok. For details and to register for host-ticketed events and tours, visit [www.rotaryconvention2012.com](http://www.rotaryconvention2012.com).

To enjoy more Rotary fellowship, consider taking a host-sponsored tour before or after the convention.

**Quick tip:** E-mail questions about host-ticketed events to [host-events@rotarycon2012.com](mailto:host-events@rotarycon2012.com).





### Reserve your hotel room

To take advantage of reduced rates, reserve your hotel room through Experient. Go to [registration2.experient-inc.com/ShowROT121/default.aspx](http://registration2.experient-inc.com/ShowROT121/default.aspx) for hotel descriptions and to select your room. Reservations are taken on a first come, first-served basis, so please book early to secure your preferred hotel. Booking for RI Convention housing begins Saturday, 21 May 2011.

**Quick tip:** E-mail questions about hotel reservations to [rotary@experient-inc.com](mailto:rotary@experient-inc.com), or call 1-800-650-6913 (toll-free in North America) or +1-847-996-5885.

### 3. Make travel arrangements after registering...

Discounts are available on select airlines for Rotarians traveling to Bangkok for the 2012 convention. Visit [www.rotary.org/convention](http://www.rotary.org/convention) for information and discount codes.



**Enjoy the 2012 RI Convention in Bangkok!**

Three different organizations work together to provide an excellent convention experience for all attendees.

For...	Work with...	E-mail	Websites
RI Convention registration	Rotary International	<a href="mailto:ri.registration@rotary.org">ri.registration@rotary.org</a>	<a href="http://www.rotary.org/memberaccess">www.rotary.org/memberaccess</a> (to register)
RI pre-convention meetings			<a href="http://www.rotary.org/convention">www.rotary.org/convention</a> (for information and forms)
RI-ticketed events			
Host-ticketed events	Bangkok Host Organization Committee (HOC)	<a href="mailto:host-events@rotarycon2012.com">host-events@rotarycon2012.com</a>	<a href="http://www.rotaryconvention2012.com">www.rotaryconvention2012.com</a>
Hotel reservations (individuals and groups)	Experient	<a href="mailto:rotary@experient-inc.com">rotary@experient-inc.com</a>	<a href="http://registration2.experient-inc.com/ShowROT121/default.aspx">http://registration2.experient-inc.com/ShowROT121/default.aspx</a>



# Convention venue & program highlights...

## The 2012 convention will take place at:

### Impact Exhibition & Convention Center

99 Popular Road, Banmai Subdistrict, Pakkred District, Nonthaburi 11120, Thailand

The Impact Center, one of Asia's largest convention centers, will be the main site for all plenary sessions, the House of Friendship, booth exhibits, and most RI-related official meetings. Located approximately 30 minutes from Bangkok's city center, the convention center offers modern amenities such as the Royal Jubilee Ballroom, where special luncheon events will be held.

### Plenary sessions

During five plenary sessions, you'll be inspired by the RI president and other leaders, who will share success stories that highlight how fellow Rotarians are setting examples of Service Above Self globally. The Rotary Foundation will also present the latest news about club and district efforts in polio eradication. Guest speakers and lively entertainment will round out the plenary sessions. Simultaneous interpretation will be offered in English, French, Japanese, Korean, Mandarin Chinese, Portuguese, Spanish, and Thai. Go to [www.rotary.org/convention](http://www.rotary.org/convention) to learn more as the program develops.

### Breakout sessions

Held on Monday, Tuesday, and Wednesday afternoons, breakout sessions offer an excellent chance for Rotarians to share best practices and project ideas. Make the most of your club experience by participating in sessions ranging from literacy projects around the world to public relations grant information.

### House of Friendship

Meet and mingle with fellow Rotarians while sampling Thai food in the House of Friendship. While there, you can visit service project booths, learn about fellowships, and check out the latest Rotary publications. There will also be a chance to buy souvenirs, check e-mail at an Internet café, and register for next year's convention.

### Host events

Thai Rotarians will warmly welcome visitors to the Land of a Thousand Smiles. A series of host events planned by the Host Organization Committee will foster greater fellowship, networking, and fun for visiting Rotarians. Visit [www.rotaryconvention2012.com](http://www.rotaryconvention2012.com) for the latest details about the Bangkok host events.

### Peace symposium

The third Rotary Peace Symposium will offer an opportunity for current and former Rotary Peace Fellows, Rotarians, and friends to discuss ways in which RI and the Foundation work to advance world understanding, goodwill, and peace through diverse initiatives. The meeting will spotlight the work of the six Rotary Peace Centers, including the center at Chulalongkorn University in Bangkok.

### Electronic badges to facilitate access

New electronic badges will allow attendees easy access to all RI events for which they have registered.



Online registration will remain open until 1 May 2012 at the on-site registration rate. The cancellation deadline is 1 April 2012.

## At the 2012 RI Convention

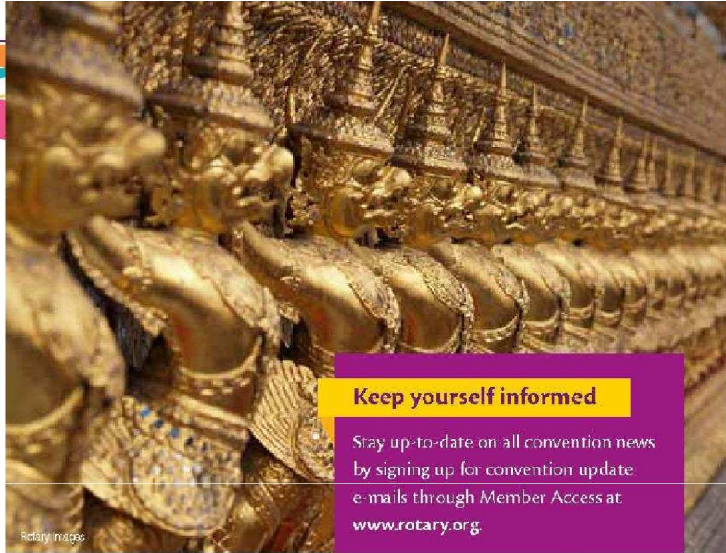
- **Networking opportunities.** Looking for an international partner for your service project or Matching Grant? The RI Convention offers an ideal opportunity to network in person with fellow Rotarians who have similar goals and a commitment to Service Above Self. Visit the Projects Exhibition to view Rotary projects and gather ideas.
- **Fellowship and groups.** Every RI Convention features several Rotary Fellowships and Rotarian Action Groups, and this year will be no exception. Browse these booths and get involved in an international group, based on hobbies, profession, or service interests.
- **Make new friends.** At a Rotary convention, you will have an opportunity to meet like-minded individuals from every continent. Many Rotarians also use the convention as a chance to see old friends. Your district or region could even sponsor its own event, such as a meeting, breakfast, or luncheon (see "Expand your horizons" opposite).



### Getting around town

Bangkok's residents use a wide variety of options to navigate the city, including a modern underground railway line, the MRT, as well as the BTS Skytrain and an elevated line running from the airport to the new City Air Terminal in the city center, operating daily. Taxis abound, offering a cool, clean ride. However, travelers should be prepared for delays in traffic; in a city of 16 million, traffic jams are hard to avoid. Bangkokians have invented some ways to beat the traffic, including river ferries, which are inexpensive, run frequently, and offer a great way to experience the city. A short ride in a tuk-tuk or motorized rickshaw can also be fun, especially at night when traffic is lighter.

No public transportation is available to get to the Impact Center. Check [www.rotary.org/convention](http://www.rotary.org/convention) as more details on shuttle buses and other transportation during the convention become available.



### Keep yourself informed

Stay up-to-date on all convention news by signing up for convention update e-mails through Member Access at [www.rotary.org](http://www.rotary.org).

### Make plans early

Follow these tips to better enjoy your experience of the RI Convention.

#### 1. Register early

Take advantage of special pre-convention pricing by registering early. Don't delay: The early registration deadline is Thursday, 1 December 2011.

#### 2. Apply early for visa

Do you need a visa to enter Thailand? Upon registration, RI automatically sends a letter of invitation to those who are residents of countries requiring a visa. RI processes all forms on a first-come, first-served basis, so please register early and apply for your visa well in advance to allow adequate time to complete the visa application process. To check if you need to have a visa to enter Thailand and to get related information, visit [www.mfa.go.th](http://www.mfa.go.th).

#### 3. Sign up for first-timer orientation

If you're new to RI conventions, don't worry. RI has organized two orientation sessions on Saturday, 6 May. Hosted by the International Fellowship of Rotarian Convention Goers, the session will give you insider tips for getting the most out of your convention experience. It's also a great opportunity to meet new Rotarian friends from around the world.

### Expand your horizons

You can enhance your convention experience in many ways. Here are a few:

- Showcase your 2011-12 service project in the Projects Exhibition in the House of Friendship. For information, contact [exhibitor@rotary.org](mailto:exhibitor@rotary.org).
- Organize your own event. Download the Unofficial Affiliate Events form at [www.rotary.org/convention](http://www.rotary.org/convention) or request one from [uae@rotary.org](mailto:uae@rotary.org).
- Volunteer as a sergeant-at-arms to help attendees and learn what goes on behind the scenes. Sign up when you register.





# Experience Thailand

Make the most out of your visit to Southeast Asia by planning a vacation before or after the convention. The cultural heritage and experiences within Bangkok offer only a glimpse of Thailand's splendors. Bangkok's central location makes it an ideal base for exploring beautiful island beaches, World Heritage sites, and national parks.



## Thailand's beaches

To the south, Thailand's beaches and coastal resorts offer stunning natural beauty and an unparalleled opportunity to relax. The beach resort town of Pattaya, in the Gulf of Thailand, is only about two hours from Bangkok. To the southwest, head to Ko Chang and enjoy the white sand beaches of Had Sai Khao. In the extreme southern tip of Thailand, visit Phuket for world-class resorts or Phang Nga Bay for snorkeling and coral reefs. On Khao Phing Kan island, explore marine parks and enjoy the bay views of Ko Tapu, an islet jutting out of the sea.

## Chiang Mai

Northern Thailand's largest city, Chiang Mai, sits at the foot of the Himalayas. For a scenic adventure, trek in surrounding parks and countryside. There, you can view waterfalls, ride on an elephant, or take a trip on a whitewater raft. Enjoy the region's unique culture and delicious cuisine, and shop for silk products and handicrafts of the indigenous hill peoples of the region. Chiang Mai also features many ancient temples to explore and golf courses to play.

## Isan

Visit the northeast region of the country, Isan, to experience rural Thailand and local Laos and Khmer cultures. The Khmer temple at Phanom Rung dates to the 10th century, while the *wat* at Khao Kaen is situated on a lake, offering spectacular views. Isan's natural scenery can be enjoyed during a hike in the Phu Phan National Park or on a boat ride down the Mekong River along the Laos border.

## Discovering Thai culture

### Thai etiquette

According to Thai culture, the head is considered to be the residing place of the soul. Touching or reaching over another's head is considered highly offensive. On the other hand, feet, being farthest from the head, are considered dirty and foul. Visitors should be mindful not to prop feet up on desks or show the bottom of their feet while crossing legs. Be prepared to remove shoes when entering a home.



## Gateway to Southeast Asia

A major hub in Southeast Asia, Bangkok can serve as your base to extend your trip to regional attractions such as the stunning temple of Angkor Wat in Cambodia or the bustling cities of Singapore, Hong Kong, or Kuala Lumpur. There are daily flights to major regional destinations from Bangkok.



All photos on this page © Tourism Authority of Thailand

## 2012 Rotary International Convention Preliminary Program

### Key to photo credits:

BMA: © Bangkok Metropolitan Administration  
TAT: © Tourism Authority of Thailand  
TCCD: © Thailand Convention and Exhibition Bureau

### Wednesday, 2 May

15:00-19:00 Rotary Peace Symposium Registration

### Thursday, 3 May

08:00-12:00 Rotary Peace Symposium Registration  
09:00-17:00 Rotary Peace Symposium  
13:00-22:00 2012 International RYLA (by invitation only)  
15:00-19:00 Registration: Pre-convention, International Institute, Convention  
17:30-19:00 International Institute Welcome Reception  
17:30-19:00 Youth Exchange Officers Welcome Reception

### Friday, 4 May

08:00-18:00 Registration: Pre-convention, International Institute, Convention  
08:30-17:00 International Institute  
09:00-17:00 Rotary Peace Symposium  
09:00-17:00 Youth Exchange Officers Pre-convention Meeting  
09:00-17:00 Rotaract Pre-convention Meeting  
09:00-22:00 2012 International RYLA (by invitation only)  
12:00-13:45 International Institute Luncheon (RI-ticketed event)  
12:00-13:45 Rotary Peace Symposium Luncheon (RI-ticketed event)  
19:00-21:00 International Institute Dinner (RI-ticketed event)  
19:00-21:30 Youth Exchange Officers Reception and Banquet (RI-ticketed event)

### Saturday, 5 May

08:00-18:00 Registration: Pre-convention, International Institute, Convention  
08:30-12:30 International Institute  
09:00-17:00 Rotary Alumni Celebration  
09:00-17:00 Youth Exchange Officers Pre-convention Meeting  
09:00-17:00 Rotaract Pre-convention Meeting  
09:00-22:00 2012 International RYLA (by invitation only)  
09:00-10:00 Orientation for First-Time Convention Attendees  
10:00-10:30 House of Friendship Grand Opening  
10:00-18:00 House of Friendship  
14:00-15:00 Orientation for First-Time Convention Attendees  
TBD Saturday Night Concert (host-ticketed event)

### Sunday, 6 May

08:00-18:00 Convention Registration  
08:30-09:30 Interfaith Service  
09:00-17:00 House of Friendship  
10:00-12:30 Opening Plenary Session (first seating)  
13:00-15:00 Paul Harris Fellows Event  
15:30-18:00 Opening Plenary Session (second seating)

### Monday, 7 May

08:00-18:00 Convention Registration  
09:00-18:00 House of Friendship  
09:00-09:25 Preplenary Entertainment  
09:30-12:00 Plenary Session 2  
12:30-14:00 President's Recognition Luncheon (RI-ticketed event)  
14:30-16:00 Breakout Sessions  
18:00-19:00 Host Hospitality

### Tuesday, 8 May

08:00-18:00 Convention Registration  
08:45-09:10 Preplenary Entertainment  
09:00-18:00 House of Friendship  
09:15-11:45 Plenary Session 3  
12:15-14:00 President-elect's Leadership Luncheon (RI-ticketed event)  
14:30-16:00 Breakout Sessions  
18:15-TBD Host-Ticketed Event (by invitation only)

### Wednesday, 9 May

08:00-16:00 Convention Registration  
08:45-09:10 Preplenary Entertainment  
09:00-16:00 House of Friendship  
09:15-11:45 Plenary Session 4  
12:15-14:00 Officers Reunion Luncheon (RI-ticketed event)  
14:30-15:30 Convention Bidding Workshop  
14:30-16:00 Breakout Sessions  
16:30-19:00 Closing Plenary Session

This program schedule was current at the time of publication. All events are considered tentative and subject to change. See [www.rotary.org/convention](http://www.rotary.org/convention) for the most up-to-date information.

## Discovering Thai culture

### Learning Thai

<i>Sawasdee</i>	Hello
<i>Sabai dee mai</i>	How are you?
<i>Kawp kun</i>	Thank you
<i>Mai bpen rai</i>	You're welcome
<i>Khaw toht</i>	Excuse me/sorry

To be polite, men add *krap* and women add *kha* to the end of their sentence, e.g., *khaw toht krap* (excuse me; male speaker) or *kawp kun kha* (thank you; female speaker).





**ROTARY INTERNATIONAL**

One Rotary Center  
1560 Sherman Avenue  
Evanston, IL 60201-3698 USA  
[www.rotary.org](http://www.rotary.org)

906-EN—(611)

Front and back cover images:  
© Tourism Authority of Thailand (top)  
© Thailand Convention and Exhibition Bureau (bottom)